



J-U-B COMPANIES



THE
LANGDON
GROUP



GATEWAY
MAPPING
INC.

ADDENDUM NO. 8

DATE: September 5, 2025

FROM: Matt Filla, PE, on behalf of the Town of Palisade

TO: All Bidders of Record

RE: Sewer Transfer Project

All Bidders of Record responding to the above referenced solicitation are hereby instructed that the requirements have been clarified, modified, superseded and supplemented as to this date as hereinafter described.

Please make note of the following bid document modifications:

1. Sheet D-102 shall be deleted and replaced with the attached updated drawing.
2. Technical Section 2: Sitework shall include the following statement: Forcemain shall be tested for pressure and leakage in accordance with AWWA Standard C-603, Section 4 and 5. The Contractor shall furnish all labor, equipment, tools, water, and other incidental items required to conduct the tests.

The original solicitation for the project noted above is amended as noted. All other conditions of the subject remain the same.

Respectfully,

A handwritten signature in blue ink, reading "Matt Filla".

Matt Filla, PE

Project Engineer – Lead, J-U-B Engineers, Inc.

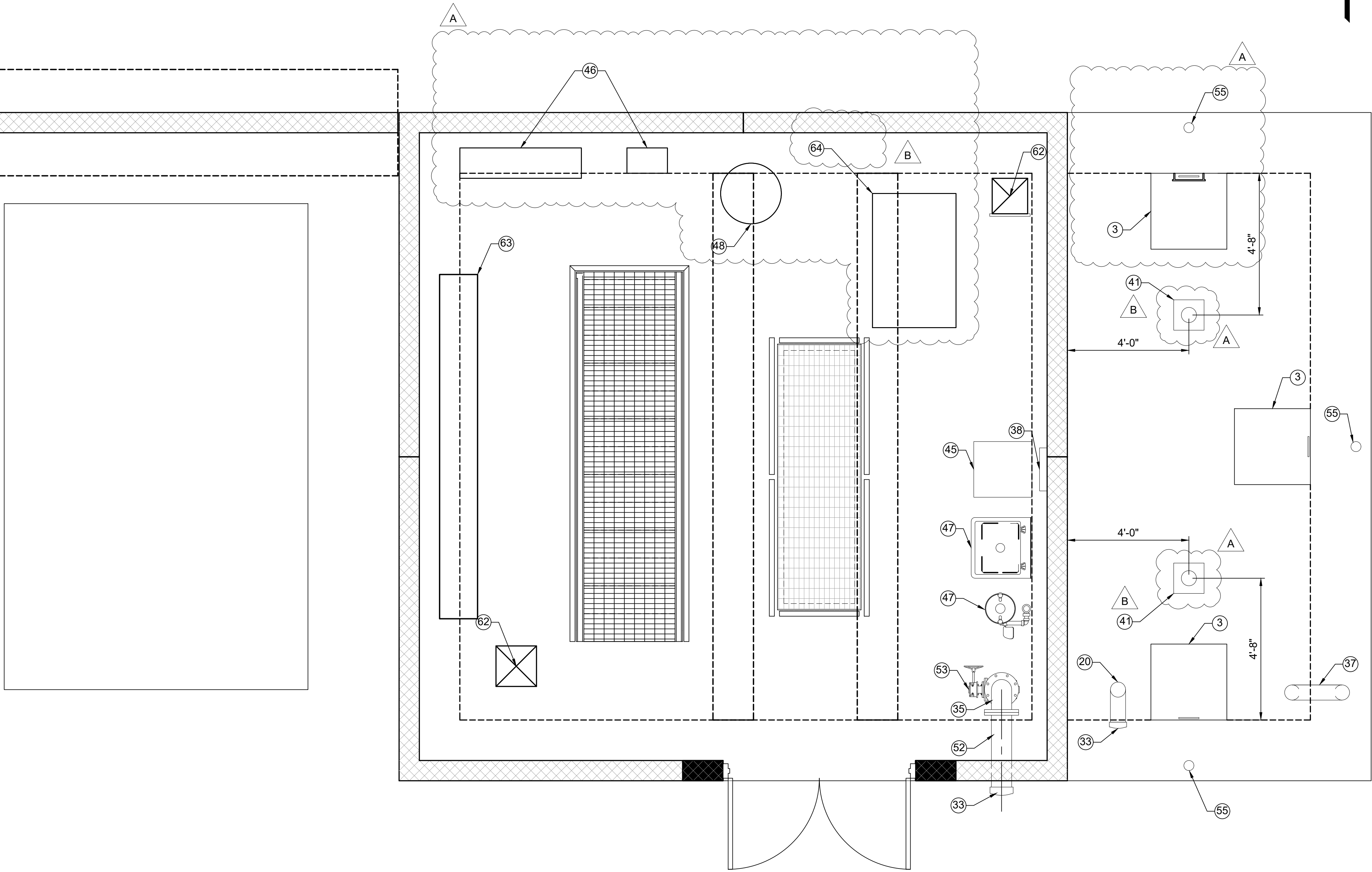
Plot Date: 9/5/2025 10:18 AM Plotted By: Caleb Herring
Date Created: 9/5/2025 JUB.COM\CENTRAL\CLIENTS\CO PALISADE PROJECTS\81-23-029 SEWER TRANSFER DESIGN\CAD SHEET\MECHANICAL\81-23-029 D-101X.DWG

PUMP AND PIPING NOTES:

- 1 VERTICAL DRY PIT SUBMERSIBLE PUMP W/ 45 HP MOTOR, PER SECTION 43 25 04.
2 CONCRETE PUMP PEDESTAL, SEE DETAIL D-05000/D-501.
3 30"x30" MIN. CLEAR OPENING ALUMINUM SINGLE LEAF ACCESS DOOR W/ STAINLESS STEEL HARDWARE, LADDER UP ASSEMBLY, AND ORANGE SAFETY GRATE (HALLIDAY PRODUCTS OR EQUAL). HATCH SHALL BE 300 PSF RATED WITH CHANNEL FRAME FOR DRAINAGE. SEE DETAIL D-05010/D-501.
4 INSTALL PROTECTIVE COATING ON INTERIOR WET WELL SURFACES, SEWER SHIELD 150 SPRAYABLE, OR APPROVED EQUAL. SEE TECHNICAL SECTION 2 CORROSION PROTECTION.
5 MANUAL AIR RELEASE PIPE TAP TYPE B, CONNECT TO FLEX TUBING AND ROUTE TO SUMP, SEE DETAIL D-15164/D-506.
6 SLEEVED PIPE WALL PENETRATION TYPE A, SEE DETAIL D-15005/D-502.
7 PIPE SPOOL WALL PENETRATION TYPE D, SEE DETAIL D-15000/D-502.
8 10" D.I. 90° BEND (FLxFLARE).
9 4" D.I. 90° BEND.
10 10" D.I. FLANGE COUPLING ADAPTER, RESTRAIN WITH 6 SS TIE RODS.
11 10" D.I. PIPE (FLxPE).
12 ADJUSTABLE PIPE SUPPORT. SEE DETAIL D-15070/D-504.
13 6" CHECK VALVE (CV-2, PER SECTION 43 30 00) WITH LEVER POSITION INDICATOR (FL).
14 10" PLUG VALVE (PV-1, PER SECTION 43 30 00) WITH GEAR OPERATOR.
15 6"x6"x8" D.I. TEE (FL).
16 FLANGED PRESSURE SENSOR WITH PRESSURE GAUGE SEE DETAIL D-15161/D-506.
17 18" D.I. PIPE (MJ).
18 LARGE PIPE TO STRUCTURE TRANSITION, SEE DETAIL C-02123/C-503.
19 6" D.I. 90° BEND (FL).
20 8" STAINLESS STEEL 90° BEND, WELDED.
21 SUMP PUMP, SEE DETAIL 1/D-508.
22 ABOVE GRADE WALL PIPE PENETRATION TYPE B, SEE DETAIL D-15010/D-503.
23 48"x30" MIN. ALUMINUM DOUBLE LEAF ACCESS DOOR WITH STAINLESS HARDWARE, LADDER UP ASSEMBLY, AND ORANGE SAFETY GRATE (HALLIDAY PRODUCTS OR EQUAL). SEE DETAIL D-05015/D-501.
24 6"x4" ECCENTRIC REDUCER, INSTALL FLAT SIDE UP.
25 8" STAINLESS STEEL PIPE, WELDED JOINTS.
26 6"x6"x6" D.I. TEE (FL).
27 6" PLUG VALVE (PV-1, PER SECTION 43 30 00) WITH CHAIN OPERATOR (FL).
28 PIPE WALL ANCHOR, SEE DETAIL D-15100/D-504.
29 6" MAGNETIC FLOW METER (FL), PER SECTION 40 90 00.
30 PIPE TO STRUCTURE TRANSITION, SEE DETAIL C-02122/C-503.
31 8" D.I. PIPE (MJ).
32 6" 90° BEND W/ BASE (FL), SEE DETAIL D-15075/D-504.
33 8" ALUMINUM MALE CAMLOCK FITTING WITH CAMLOCK PLUG.
34 FLOOR PENETRATION TYPE A, SEE DETAIL D-15020/D-503.
35 8"x6" D.I. REDUCING 90° BEND (FL).
36 6" D.I. PIPE (FLxPE).
37 SCREENED VENT, SEE DETAIL D-05100/D-501.
38 pH/TEMP SENSOR, PER SECTION 40 90 00.
39 8" STAINLESS STEEL PIPE, WELDED (FLARExPE).
40 SINGLE ANODE TEST STATION, SEE DETAIL 2/C-502.
41 VAPEX ODOR CONTROL SYSTEM DROP NOZZLE ASSEMBLY. PROVIDE 10" FLOOR PENETRATION FOR NOZZLE ACCESS AND ASSEMBLY INSTALLATION.
42 BACKUP FLOAT SWITCHES FOR PUMP CONTROL, PER SECTION 40 90 00.
43 RADAR LEVEL TRANSMITTER, PER SECTION 40 90 00.
44 NOT USED.
45 REFRIGERATED COMPOSITE SAMPLER. EMERALD COAST WAVE WASTEWATER SAMPLER OR APPROVED EQUAL.
46 HEARTLAND OXYGEN GENERATOR (HOX-060-3) AND CONTROL BOX.
47 UTILITY SINK AND EYEWASH STATION W/ DRAIN BACK TO WETWELL SEE DETAILS 3&4/D-508.
48 HEARTLAND 120 GAL OXYGEN STORAGE TANK.
49 NOT USED.
50 MANHOLE STEP. RUNGS @ 1'-0".
51 6" D.I. FLANGE COUPLING ADAPTER, RESTRAIN WITH 6 SS TIE RODS.
52 8" D.I. PIPE (FLxPE).
53 6" PLUG VALVE (PV-1, PER SECTION 43 30 00) WITH GEAR OPERATOR.
54 8"x6" D.I. 90° BEND (FL).
55 INSTALL PERMANENT DECK MOUNT SLEEVE DAVIT MOUNT BASE WITH HEAVY-DUTY SLEEVE CAP TO FIT 3M DBI-SALA CONFINED SPACE PERMANENT FLUSH FLOOR MOUNT SLEEVE DAVIT MAST BASE 8512828, STAINLESS STEEL ONE-PIECE OFFSET DAVIT MAST, OR EQUAL, SEE SHEET D-301.
56 CONCRETE FILLET TO CREATE SLOPE, SEE SHEET S-301.
57 NOT USED.
58 SLEEVED PIPE PENETRATION TYPE D, SEE D-15005/D-502.
59 4" BACK WATER FLOOD VALVE (CV-8, PER SECTION 43 30 00).
60 6"Ø CAST IRON FLOOR DRAIN (INSIDE PIGGING STATION VAULT), P-TRAP, & 4" PVC DRAIN TO WETWELL SLOPED AT 2% MIN.
61 CATHODIC PROTECTION BOND WIRES, SEE DETAIL 2/C-502.
62 SEE MECHANICAL SHEET, M1-1.
63 CONTROL PANEL, SEE ELECTRICAL SHEETS.
64 VAPEX NANO ODOR CONTROL SYSTEM.
65 H2S GAS MONITOR, ACRULOG PPM OR APPROVED EQUAL, PER SECTION 40 90 00. CONTRACTOR TO PROVIDE STAINLESS HANGER ACCESSORIES WET WELL AND MANHOLE INSTALLATION.

GENERAL SHEET NOTES:

1. COORDINATE PROCESS MECHANICAL DRAWINGS WITH STRUCTURAL, CIVIL, HVAC, AND ELECTRICAL DRAWINGS. NOTIFY ENGINEER OF ANY DISCREPANCIES.



MAIN LEVEL PIPING PLAN

SCALE: 1/2"=1'-0"



J-U-B ENGINEERS, INC.

J-U-B ENGINEERS, INC.

305 S. Main Street

Unit 6

Palisade, CO 81526

Phone: 970.208.8508

www.jub.com

BID SET



REUSE OF DRAWINGS
JUB SHALL RETAIN ALL COMMON LAW, STATUTORY, COPYRIGHT AND OTHER RIGHTS IN THIS DESIGN. NO PART OF THIS DESIGN SHALL BE REPRODUCED OR TRANSMITTED IN ANY FORM OR BY ANY MEANS, ELECTRONIC OR MECHANICAL, WITHOUT THE WRITTEN CONSENT OF JUB. ANY REUSE WITHOUT WRITTEN CONSENT BY JUB WILL BE AT CLIENTS SOLE RISK AND WITHOUT LIABILITY OR LEGAL EXPOSURE TO JUB.

REVISION

NO.	DESCRIPTION	BY	DATE
B	CORRECTIONS TO VAPEX ODOR CONTROL EQUIPMENT	CH	9-5-25
A	REUSED CODE CONTROL EQUIPMENT & LAYOUT	JDM	9-20-25

SEWER TRANSFER PROJECT
TOWN OF PALISADE

MAIN LEVEL PIPING PLAN

FILE: 81-23-029_D-101X

JUB PROJ. #: 81-23-029

DRAWN BY: WVD

DESIGN BY: KAR / AMN

CHECKED BY: GMV / MWV

AT FULL SIZE, IF NOT ONE INCH SCALE ACCORDINGLY

LAST UPDATED: 9/5/2025

SHEET NUMBER:

D-102